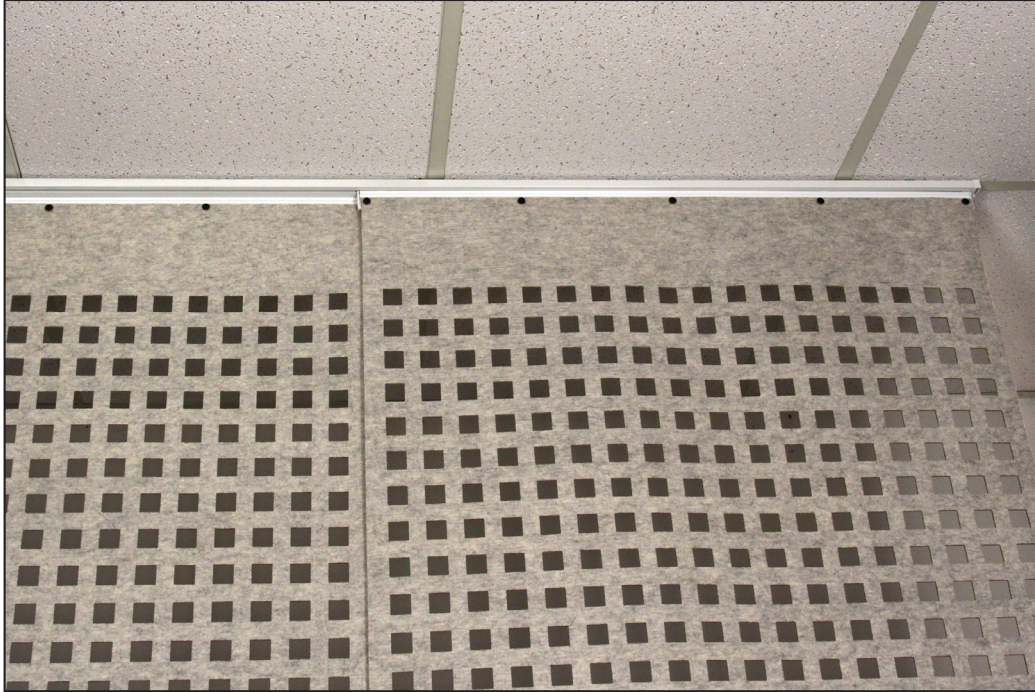


Installing the Track System for LaserFelt Panels.



1. **Establish the location of the track system.** If needed, draw a line to ensure the track will be straight. In our example, we are using the metal railing of the drop ceiling.



- 2. Mark the locations of the anchors.** We suggest using four anchors for 48 inch, to 72 inch tracks. Place them evenly apart along the length of where the track will be installed. The two locations for the anchors on the ends should be placed approximately 5 inches from the ends of the track. After the locations are marked, drill pilot holes for the anchors. (See last page for anchoring into drop ceiling.)

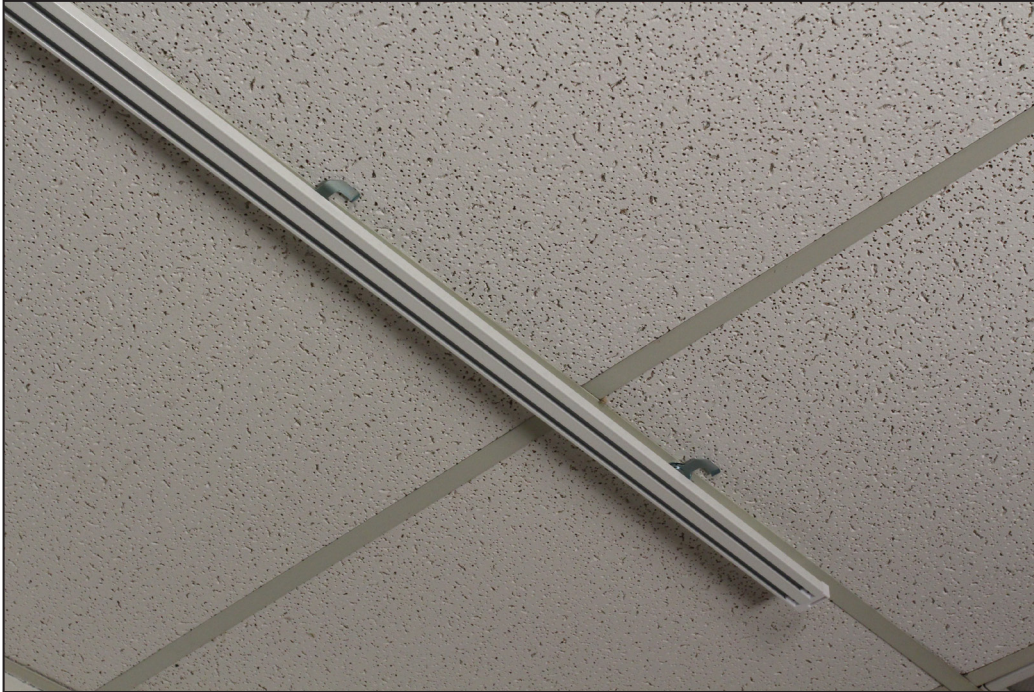


- 3. Place the anchors** using an appropriate screw for the surface. After the anchors are in place, pivot them so that they are facing out so the track can fit over the locking mechanism.



4. Attaching track to the anchors.

Move the track so it fits into the anchors. Once in place, rotate the anchor to lock the track into place. When turning the anchor, it should feel tight and the track should fit firmly in place.



5. Installing the panels into the track.

Slide the panels into the track system via the side opening. In case there is not enough room, you should insert the panels prior to attaching the track to the anchors (step 4).



6. Installing the end caps.

Finally, once all the panels are on the track, place the end cap into its location. Tighten the screws with a Phillips screwdriver.



Additional Information

Installing into drop ceiling tiles: Using the provided acrylic washers, anchors can be installed on drop ceiling tiles. After drilling a pilot hole, insert a bolt and place the washer on the opposite side of the tile. Add a nut to the bolt, make it snug be do not over tighten.



Splices: After installing the first portion of track, slide the second portion of the track snugly against the first. After they are spliced together lock the anchors of the second portion.

